



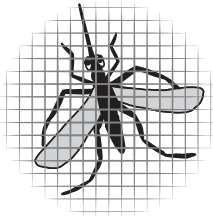
Pat Saito • Ward 9

Councillor's Report



Spring 2003 www.ward9.ca

300 City Centre Drive, Mississauga, Ontario L5B 3C1 • Tel: 905-896-5900 • Fax: 905-896-5463 • Email: pat.saito@mississauga.ca



West Nile Virus

The following information has been provided by the Medical Officer of Health.

A process has been developed to handle WNV calls about dead crows, standing water complaints, storm water management ponds, natural area and catch basins.

For general information about mosquito control, personal protection and updates on our WNV surveillance activities, visit the Region of Peel West Nile site at www.peel-bugbite.ca or contact Health Line Peel at 905-799-7700, or healthlinepeel@region.peel.on.ca

Dead Crow Surveillance

The 2003 dead crow surveillance program started on April 15th. Peel Health has requested the public to report dead crows, the species most susceptible to the disease. You can report dead crow sightings to Health Line Peel at 905-799-7700. This service will operate from 8:00 a.m. to 6:00 p.m. Mondays to Fridays (starting May 5th) and 10:00 a.m. to 5:00 p.m. on weekends. It is not necessary to report any other dead bird that may be found.

Suitable reports (i.e. meeting the criteria for accessibility, species and state of preservation) will

*Continues on page 5
(see **West Nile**)*

Councillor's Message

Welcome to the Spring 2003 edition of the Ward 9 report. In this newsletter, I have highlighted issues of specific interest to each of the five Ward 9 communities of Meadowvale; Business Park, Lisgar, Central Erin Mills and Churchill Meadows as well as provided information of general interest. I appreciate the suggestions for items that I have received from many residents and I encourage you to keep sending me ideas for future issues.

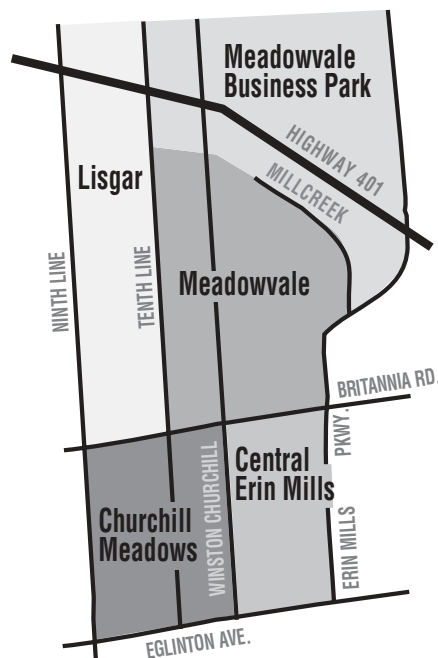
You can stay up to date on this and other key issues in the ward, city and region by visiting my Ward 9 web site at www.ward9.ca.

I am pleased that more than 200 residents have subscribed to my online Ward 9 newsletter and receive instant information by email.

With more than 95,000 residents, Ward 9 continues to be one of the busiest wards in the city. I am fortunate to have two excellent staff people to assist me in handling the large amount of calls, emails and letters that we receive every day. Those of you who have called or emailed my office have already met my assistants, Angela and Teresa, and I know from the positive feedback I receive from residents that they are very helpful in dealing with your issues. Please feel free to contact my office at any time with your concerns, questions and feedback on any issues. Your input is always welcome.

Pat Saito, Councillor Ward 9

Ward 9 Neighbourhoods



TACKLING THE LITTER PROBLEM

Report Littering online at: www.mississauga.ca/litterbug
Fines are \$305.

Graffiti: report the location for cleanup to 905-896-5655 or online: www.mississauga.ca/residents/forms/graffiti

Take pride in your community, don't litter.

Meadowvale Business Park



Our Water Tower gets a new look with the City and Region name.

Welcome to New Businesses in Meadowvale

PH & Harval, Argentia Rd.; Biovail, Derry and Mississauga Rd.; Patheon-head office moves to Dupont Building on Derry Rd.

GO Transit Meadowvale Station

The additional 750 parking spaces at the Meadowvale GO Station were completed, bringing the total number spaces to 1580. The revamped Kiss 'n' Ride has reduced the pedestrian/vehicular conflicts that existed before. Even though Meadowvale is only operating at 70 per cent of parking capacity, 10 per cent of commuters are taking advantage of GO's reserved parking program

which guarantees each commuter the same reserved spot at the station for \$60 a month. The Mississauga Transit GO Shuttle has been very successful, with last year's passenger totals equaling 42,000. For shuttle information call 906-615-4636 or www.mississaugatransit.com

Millcreek Road Work

Thank you for your patience as the Region's contractors installed the watermain on Millcreek. Weather dictated the extended construction time.

First Pro Westgate Centre

From over 300 submissions for the "Name the Mall contest", Thelma Buckle's submission of "First Pro Westgate Centre" was chosen as the winner.

Meadowvale

Facility Projects

Meadow Green Park: Pathway reconstruction.

Eden Grove: Upgrade basketball court pad and play equipment.

Windwood Park: Replace five light poles.

Glen Eden/Promenade

Meadows: Play equipment.

Meadowvale Theatre: New carpet.

Meadowvale Library:

Now open at new location Meadowvale Town Centre.

Meadowvale Four Rinks: Closed for redevelopment. Reopening late September.

Meadowvale Community Centre: Installation of closed circuit television; fluorescent lighting in the pool deck area; replacement of partitions in washrooms.

Portable skateboarding: The SK8 park will be at Meadowvale Community Centre from August 5th to August 29th with the following operating hours: Monday to Thursday Noon - 5 p.m. Admission is \$3.00 per visit for ages; 10 to 17 years. Participants must bring and wear their own helmet. Learn to Skateboard Lessons are also being offered throughout the summer for two

age groups. See page 214 of "Inside Out Mississauga" or visit the website at:

www.mississauga.ca/rec&parcs.

Road Projects

Winston Churchill and Argentia:

The work will include lane widening from Argentia to the Hwy 401; dual left turn lanes and dedicated right turn lanes will be built at all four corners. Construction is expected for fall.

Winston Churchill Boulevard (from south of Derry Rd. to north of Tradewind):

This is a joint project with the Region of Peel and City of Mississauga.

- Additional lanes on Winston Churchill Blvd. from just south of Derry Rd. to Tradewind/ Danton and on Derry Rd. from Shelter Bay to just west of Winston Churchill Blvd.
- Re-construction of the intersection of Derry and Winston Churchill to improve traffic flow. The intersection work includes a southbound - dual left turn going east onto Derry Rd.; a single northbound left turn lane to turn west onto Derry Rd.; a dual left turn eastbound on Derry Rd. to northbound Winston Churchill

Bldv.; and right turn lanes added at all four corners.

The project also includes noise attenuation walls. Expected start date is mid-June 2003. For more information contact: City Project Manager, Michael Won at 905-896-5894 or Randy Senko, Regional Project Mgr. at 905-791-7800 ext. 4590.

Road Resurfacing Projects

Battleford Road: Tenth Line to Winston Churchill Blvd..

Edenwood Drive: Aquitaine Avenue to Battleford Rd..

Millcreek Drive: from Derry Rd. W. to Aquitaine Ave., after watermain work completed.

Syntex Drive: Derry Rd. W. to Meadowvale Blvd..

Glen Erin Drive: A new 40 km. flashing sign will be installed at Elizabeth Seton School.

Meadowvale Town Centre Update

Re-building a number of freestanding stores around the circle. Completion expected by fall-2003. New tenants are: Canadian Tire - gas station, Liquor Store (LCBO), Shopper's Drug Mart, McDonald's drive through, Tim Horton's and Shoeless Joe's.

Lisgar

Park Construction Projects

Kindree Cemetery: Installation of interpretive plaque.

Lisgar Meadow Brook:

Installation of drainage system to re-direct the melting spring water west of asphalt pathway.

Terragar/Gumwood park

completion: Includes a 48-stall parking lot which can be accessed via Cactus Gate, a lit asphalt walkway system, new shrubs and trees, as well as a softball field, senior soccer field, minor soccer field, and children's play area.

A name for this park is needed from the community. Send suggestions to me at: pat.saito@mississauga.ca

Lisgar GO Station

Although a location for a future station has been identified for many years at Argentia and Tenth Line, the owner of the property would like to use it for retail uses and is working with GO Transit to find an acceptable alternate location nearby. We are expecting a report on the alternate lands location study later this year.

GO Transit does not have enough money in their budget for the land purchase at this time so this will not happen immediately. As a "growth" station, GO also needs a commitment of funds from the federal government to participate in the province's plan to expand and grow GO's service. I will keep you informed as these plans proceed.

Road Resurfacing Projects

- Mockingbird Lane: Trelawny Circle to Trelawny Circle
- Snow Goose Lanes



Message from the Lisgar Residents' Association

If you live south of Hwy 401, west of Tenth Line, north of Britannia, and east of Ninth Line, you are a part of the Lisgar Residents' Association (LRA). The LRA tries to provide residents with informative and entertaining events. Every May we participate in the City's Earth Days with a tree planting and every September we host our Annual General Meeting. We host monthly executive meetings to discuss issues of concern. We invite you to come out and participate in your local community, and perhaps consider a position on our executive. We have been looking out for our local residents for more than 13 years. Visit: www.lisgar.com for information on all upcoming events.

Churchill Meadows

Driveway Update

The by-law amending driveway widths in Churchill Meadows came into effect in May 2003. The width for a single car driveway increases from 3.8 m (12.5 ft) to a maximum width of 4.3 m (14.1ft) for an interior lot and a maximum width of 4.7m (15.4 ft) for a corner lot. The driveway width for a double car driveway increases from 5.5 m (18 ft) to 6.5 m (21.3 ft).

Park Update

We are re-evaluating the proposed recreational needs of the community as part of the five year Future Directions, outdoor and field assessment review.

Park Names are needed for five main central parks and eight community parkettes. Please submit suggestions to the Churchill Meadows Residents Assoc.: carlosramos@sympatico.ca.

- Behind the new Middle School on Freshwater Dr., 17.2 acres will host four unlit sport fields and new play equipment. This park will be phased with expected completion in 2005 or 2006.
- North side of Thomas Street, south portion of the community park -

the City is currently in discussion with the school boards regarding the shared school/library facility with community use. Currently developing splash pad and overall park development with play equipment, permanent parking and four new tennis courts.

Future school campus

Design will start soon on the three-school campus just north of Eglinton next to the 28 acre forest.

Fire Station #122

Fire station #122 at Thomas and Tenth Line is fully staffed and operational. This facility has 20 firefighters working in four shifts. Watch for the grand opening celebration in late summer when all residents will be invited to the unveiling of the new pumper. In the meantime, residents are welcome to stop by the fire hall to meet the crew, or call 905-615-3777 to arrange a station visit or tour. For emergencies, call 911.



Road Works

Tenth Line: South of Thomas Street to Eglinton

The road closure is July 1st - Sept. 1st 2003. Traffic will be detoured along Britannia Rd. and Eglinton Avenue to Ninth Line or Winston Churchill Blvd. The construction of the storm and sanitary sewer lines along Tenth Line will be scheduled for 2005 or 2006.

Message from the Churchill Meadows Residents' Assoc.

Represents the area bound by Britannia Rd. and Eglinton Avenue, Ninth Line West and Winston Churchill Boulevard). Our mission statement is to advocate for the betterment of community living for all residents of Churchill Meadows. Recently established, our group is a civic and social organization whose members are committed to keeping our flourishing new community an enjoyable place to live and visit. For more information to become active with our association contact: President, Carlos Ramos at carlosramos@sympatico.ca

Central Erin Mills

Erin Mills Regional Centre

Beer Store and Boston Pizza are expected to open in the fall.

Village of Erin Meadows

A new Long Term Care Facility has opened at 2930 Erin Centre Blvd.

It is a 180 bed facility specializing in Active Dementia, and physical care for both young adults and seniors. They have a strong focus on interaction with the

community at large, welcome visits from the community, to provide entertainment and services. They also have a community meeting room available. For more information call 905-569-7155.

Erin Meadows Community Centre

Names are still needed for the meeting rooms. Please submit your suggestions to me at: pat.saito@mississauga.ca

Canadian Cancer Society

Relay for Life, June 20 and 21.

The CCS will run the relay again at John Fraser Secondary School at 2665 Erin Centre Boulevard, to raise funds for cancer research, and raise awareness and support for the community at large. This community-supported event will host a candle light vigil on the track during the twilight hours in memory of those who have lost their battle with cancer. The on-field contact cell number is 647-287-4918.

A message from Catholic School Board Trustee: *Esther O'Toole*

Welcome new appointments for the September 2003 school year: Principal Cathy Kwiatkoski for Our Lady of Mount Carmel Secondary School; Mark Baswick, Principal for St. Albert of Jerusalem. Congratulations on the permanent appointment of Tim Waters as Principal for St. Elizabeth Seton. Farewell to retiring Superintendent for Mississauga North Family of Schools, Lou Intini. Thank you to all the parent councils and volunteers for making our school community so wonderful.

A message from your Public School Trustee: *Sue McFadden*

I wish each of you a safe and healthy summer vacation and look forward to seeing you in September. There will be some staff changes when you return to your schools: Ms Elaine Ney, will be the new Principal at Trelawny PS; Mr. Frank Trachsler, Principal, moves to the new Osprey Woods PS in Lisgar; Mrs. Pat Noble becomes Principal at Meadowvale SS; Ms. Lori Pedwell takes a position at the Board office.

The new Middle School in Churchill Meadows, opening in September 2003, has been named after Ruth Thompson. Ruth began her dedicated career as a trustee in 1973, has served as vice-chair for the last 10 years, and is renowned for her strong advocacy for public education province wide. This is to honour an individual who has focused on the success of children these past 30 years.

Congratulations to Settlers Green P.S. who celebrated their 25 anniversary this year. Middlebury PS also celebrates their tenth anniversary. It was nice to see those who attended these school reunions.

Please feel free to contact me regarding public school issues at: Sue McFadden, 905-821-9889 OR by email at sue.mcfadden@peelsb.com

How to Spot a Residential Marijuana Grow House

- Residents only attend the home occasionally and for short periods of time
- Untidy appearance to the property: Lawns unkempt, driveways not cleared.
- Garage is the primary entry to the home in order to conceal activities.
- Equipment such as large fans, lights, plastic planter and soil carried in at odd hours.
- Windows darkened to prevent light from coming in, and to conceal activities.
- Garbage bags containing used soil and plant material discarded in the area.
- Bright light can be seen escaping from windows, which are often covered with condensation.
- Interior lights may be left on for long periods of time, or on timers.
- Hydro meters are tampered with (seals are broken).
- Sounds of construction may be heard and ventilation fans on frequently.
- Strong skunk-like odour that can be detected outside the home.

Traffic Report from the Peel Police



Location	Duration	Charges Laid
Trelawny Cir. (near Pub. Sch.)	15h	8 speeding, 15 failure to stop + U-turns
Farmstead & Millers Grove	9h	11 failure to stop
Castlebridge Dr.	12h	23 speeding
Glen Erin Dr. - Bell Harbour	10h	19 speeding
Glen Erin Dr. - Duncairn	44h	64 speeding
McDowell & Dell Donne Dr.	2h	6 speeding, 19 failure to stop + U-turns
Ninth Line (north of Eglinton Ave.)	2m	1 violation/h-speeding/stop
Glen Erin Dr.	(ongoing)	800+ speeding + aggressive driving
Terragar Blvd. (north of Derry Rd.)	(ongoing)	1.5 violations/h-speeding/stop

The 11 Division Peel Police Community Liaison Committee (PCLC) needs new members. PCLC meets monthly for two hours at 11 Division at 3030 Erin Mills Parkway. For information about becoming involved, contact Todd Leach at 905-453-2121 ext. 116.

Residents are reminded not to trespass on private property to satisfy curiosity. Instead, call the Peel police at 905-453-3311 ext. 7260 or Crime Stoppers 1-800-222-8477.

West Nile

(Continued from the front page)

be forwarded to the municipal animal control services for pick-up. Peel Health will select the dead crow specimens that will be submitted to the Canadian Co-operative Wildlife Health Centre (CCWHC) in Guelph. Not all dead crows will be tested and once the virus has been identified in the crow population, further testing will not be undertaken. It is still important to report dead crows, since it provides crucial information about the intensity and spread of the disease.

Standing Water Complaints

Conducting standing water complaint investigations is important when identifying potential breeding sites. Investigation of standing water complaints started with the larval surveillance program on May 15th. Report standing water concerns to Health Line Peel at 905-799-7700, Mondays to Fridays between 8:00 a.m. to 5:00 p.m. or e-mail us at healthlinepeel@region.peel.on.ca

Public Property

Peel Health will investigate standing water complaints on public properties in areas such as roadside ditches and parks. Peel Health will determine if the complaint is part of our routine breeding site surveillance program.

If the complaint involves a new site, an investigation will be conducted. The site will be assessed for its ability to support WNV vector mosquito larvae. Peel Health will contact the municipal department responsible for the site and discuss remediation, and if this is not possible, the site may be treated with larvicide.

Private Property

Peel Health will record standing water complaints on private property and refer them to the municipal by-law departments. All calls should go to Health Line Peel. These will be assessed as per usual by property standards



inspectors. Peel Health will deal with small sites such as bird baths and plugged eaves troughs, through education. Significant potential breeding sites such as poorly maintained swim-ming pools that are not cleaned up, may be assessed by Peel Health for mosquito breeding, and if significant pursued through local property standard by-laws or public health legislation as appropriate.

Storm Water Management Ponds

Storm water management ponds are highly visible due to their size and location. Larval surveillance in 2002 showed that the majority did not support mosquito breeding. As in 2002, storm water management ponds will be part of our routine larval monitoring program. If significant mosquito breeding is found at these sites, we will work with the area municipalities and conservation authorities to improve biological controls in these environments. Larvicide may be used if biological controls are not practical or sufficient.

Natural Areas

Peel Health will investigate complaints about natural areas that are located on public property. Natural areas such as swamps, marshes, creeks and their floodplains breed mosquitoes of many different types. Natural areas present special challenges and concerns for mosquito control. Any intervention in these areas must take care not to unnecessarily disrupt the existing ecosystem. And while many mosquitoes are present, many may not be important vectors of WN virus. The approach to mosquito control in natural areas consists of monitoring to determine numbers and species

important to WNV transmission. Response will be based on these assessment results and may involve improving natural controls, altering water flows if it does not damage the natural ecosystem, and application of a larvicide called Bti, if other measures are insufficient to control mosquito breeding.

Public Catch Basins

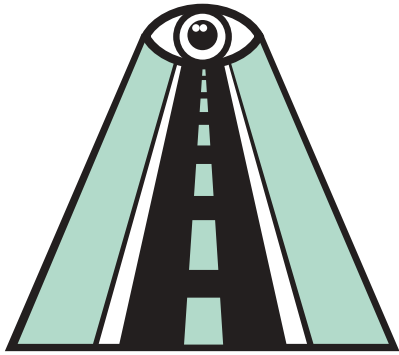
Roadside catch basins are the major habitat in urban and suburban areas for *Culex pipiens* and *Culex restuans*, the main vectors of WNV. The pest control company contracted by the Region of Peel will begin larviciding municipal roadside catch basins in mid May. Peel Health will keep the public informed of this activity by public notices in the local papers and posting the larviciding schedule on our website at www.peel-bugbite.ca.

Rear Yard Catch Basins

Catch basins are sometimes installed in rear yards of private properties to facilitate surface drainage. Rear yard catch basins are designed differently than road-side catch basins. Most are designed so they do not hold water as they do not have sumps. These areas are not part of our regular treatment program. Peel Health is requesting that homeowners with rear yard catch basin determine if their catch basin contains water prior to contacting us. This can be done by shining a flashlight down the catch basin. Peel Health staff will investigate rear yard catch basins containing water on a referral basis, assess them as potential breeding sites, and if appropriate, refer specific locations to our pest control company.

Council and the Medical Officer of Health are taking this very seriously and we will be taking necessary action as quickly as possible in all situations that warrant it.





ROAD WATCH[®]
www.roadwatch.ca

Water Wise Wednesday

- Residents are asked NOT to water lawns on Wednesday.
- No lawn watering between 10 a.m. and 4 p.m. daily.
- Watering your lawn for half an hour, once a week is all that is needed for a healthy lawn.
- The Sod Squad students will travel through the community sharing tips on how to be more water efficient.

Visit www.watersmartpeel.ca for more tips, tools, information and activities on water efficiency and things you can do to save on your water bill. For more information call 905-791-7800, ext. 4636.



Leash Free Parks

Battleford and Totoradaca Park

Battleford Leash Free park has moved to Totoredaca Park at Meadowvale Blvd north of Meadowpine in the industrial area. The new leash free area is lit, with a larger agility area, larger parking area, and a fenced in dog run for both large and small dogs.

For more information please call the Leash-Free Hotline at 416-761-7667 or www.caninefriends.com or The Puppy Club at: 905-826-0512.



Clean up after your pets and keep all dogs on a leash. Fine for dogs off leash: \$125

New Community Recycling Centre

Pending site plan approval, the new Community Recycling Centre that is being built at the old leash free dog park at Battleford Rd. and Erin Mills Parkway, could be under construction in June, 2003. Phase one of the facility will be open to the public in September.

This convenient location adjacent to Ward 9 will be the permanent recycling centre for Mississauga residents and small businesses. You will be able to drop off reusable goods, household hazardous waste, large recyclable and pick up information and supplies to support our waste management goals. This facility will be a welcomed complement to the Region's curb side recycling programs, in our efforts to divert 70 per cent of waste from landfills. For more information contact: 905-791-9499

Important Numbers

City after hours dispatch.....	905-615-3000	Ambulance	905-844-4242
City Central Switchboard.....	905-896-5000	Fire department.....	905-275-3800
Animal Control	905-896-5858	Peel Regional Police	905-453-3311
By-law Enforcement	905-896-5655	Peel Reg. after hours dispatch	905-791-7800
Parking Control	905-896-5678	Water Billing	905-791-8711
Mississauga Transit.....	905-615-4636	Waste Management/recycling.....	905-791-9499
Recreation and Parks	905-896-5342	Health Line Peel	905-799-7700
Property Taxes	905-896-5575	Go Transit	416-869-3200
MPAC-property assessment	1-866-296-6722	Mississauga Crime Prevention	905-803-8118
Meadowvale Library	905-615-4715	Enersource	905-273-9050
Meadowvale Community Centre.....	905-615-4710	Aircraft Noise Complaints	416-247-7682
Meadowvale Four Rinks	905-615-4730	Dufferin Peel Catholic DSBrd	905-890-1221
Meadowvale Theatre	905-615-4720	Peel District School Board	905-890-1099
Erin Meadows CC & Library	905-615-4750		

Ward 9 Councillor, Pat Saito

300 City Centre Drive, Mississauga, Ontario L5B 3C1
 Tel: 905-896-5900 Fax: 905-896-5463

Email: pat.saito@mississauga.ca
 Web site: www.ward9.ca